

HIGHWAYS



METRO



RAIL





Kelly Integrated Transport Services is a comprehensive service provider working in the signalling, telecommunications, electrical and civil engineering markets. Working in three principal sectors: Rail, Metro and Highway, Kelly ITS operate on a national basis and delivery is underpinned by highly competent, directly employed staff. All staff are trained and licensed specifically to client and project requirements. The approach to business is flexible, assured and responsive to customer requirements.

The company is committed to safety and has an enviable safety record. Everybody within the business is engaged in the 'Safe by Choice' behavioural safety programme - Kelly ITS recognise that the primary factor underpinning both performance and quality is people's behaviour and this starts with the attitude towards safety. Kelly Integrated Transport Services has a proven track record in delivering a first class service whilst maintaining our focus on continual improvement.

**John Tuite**  
Managing Director

# WHAT WE DO



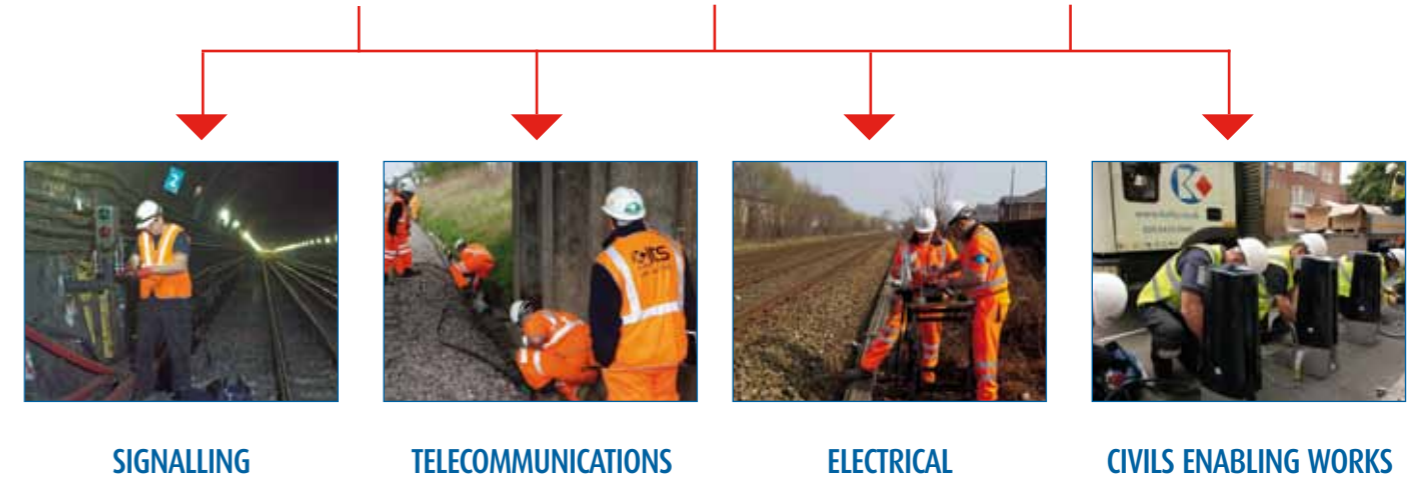
HIGHWAYS



METRO



RAIL



**DESIGN ▶ INSTALLATION ▶ TEST ▶ COMMISSION ▶ MAINTENANCE**



# HIGHWAYS



## Barclays Cycle Hire Scheme (BCHS)

Client: Transport for London

Main Contractor: Serco

Date: November 2009 - ongoing

- Kelly ITS were successfully awarded a contract to construct 50% of the BCHS sites following a competitive tender for Phase 1 in London
- The success of Kelly ITS in meeting the project milestones, and the quality of the workmanship, resulted in being awarded a significant increase in the percentage of Phase 2 sites installed in the East of London towards the Olympic venues
- Our role under the contract was to construct foundations, install the docking stations and install terminal units



## Electric Vehicle Charging Points

Client: Chargemaster PLC

Date: January 2011 - ongoing

- The UK Government has initiatives to encourage a move to electric vehicles over the next decade, with the aim of 10% of all new vehicles requiring vehicle charging units
- Chargemaster contracted Kelly ITS to provide civil and electrical installation services at numerous locations in London and the South East of their post mounted and wall mounted units
- Our main role under the contract entailed various works, including the survey of proposed locations, civil enabling works and electrical installation works



## High Speed Broadband Installation

Client: Hyperoptic Ltd

Date: October 2011 - ongoing

- Kelly ITS began work with Hyperoptic in October 2011, the project currently runs in London and it is hoped to extend this throughout the UK
- Installation of high speed broadband into blocks of private flats
- The work involves running feeder fibre between distribution points, installing traywork or trunking, flarebolt containment and CAT5e cabling and installing

## NATIONAL TRAFFIC CONTROL CENTRE

"Your attention to detail in delivering the requirements of the Project were exceptional, allied to the flexibility at all levels of your organisation, and the willingness to go that extra mile to ensure that the job was completed on time, and to an excellent standard. I would have no hesitation in recommending Kelly ITS to any organisation procuring similar services"

Chris Cox

Contract Director National Traffic Control Centre - Serco Civil Government



## BARCLAYS CYCLE HIRE SCHEME

"I would like to thank you and your team for the outstanding effort and achievement in working with us to deliver the Mayor of London's Cycle Hire Scheme. Your team were critical in helping us to construct, install and commission over 300 sites in little over three months - with the vast majority of the installation and commissioning work completed in the last three weeks. Thanks to an excellent working relationship and creativity in overcoming the numerous challenges - not least the inevitable planning and traffic restrictions in London - the work was completed to a high standard.

Jeroen Weimer

Managing Director Transport - Serco



## EMERGENCY ROADSIDE TELEPHONES

"I would like to thank Kelly ITS for their services in successfully implementing the ERT 354 Installation Scheme. During the programme, you installed and commissioned over 6000 Emergency Roadside Telephones. I feel that our ability to communicate freely with you, allied to your flexible and innovative approach were central to this success. You demonstrated a wide scope of technical expertise, together with liaison with the HA Area teams, RCC's and other associated stakeholders. Kelly ITS has become a trusted supplier to the Highways Agency and I would like to highly recommend them to undertake technology based work."

Phil Graham

Traffic Technology Equipment Procurement Team Leader - Highways Agency



# RAIL



**FTN / GSM-R Fibre and Copper Tails Framework**  
 Client: Network Rail  
 Date: January 2011 - ongoing

- Kelly ITS secured a two year nationwide framework agreement to install and test fibre and copper tails on the cable and transmission network infrastructure supporting Network Rail's continued FTN/GSM-R programme
- Kelly ITS are acting as Principal Contractor when undertaking works orders under the framework. It is anticipated that around 800 sites will be installed under the framework
- For each tail cable site, the works orders undertaken through this framework comprise many elements including enabling works such as surveys, vegetation clearance, trough de-lidding and re-lidding, undertrack crossings and advance testing of the existing infrastructure to establish its credibility



**Glasgow Central PA/VA**  
 Client: Network Rail  
 Main Contractor: Babcock Rail  
 Date: August 2010 - February 2011

- Babcock Rail were awarded a Design and Construct contract to deliver a PA/VA System Scheme within the Glasgow Central Station in Scotland, Babcock Rail awarded the installation and testing of this work to Kelly ITS following a competitive tender
- The project require Kelly ITS to provide civils and electrical services
- The project was delivered to programme and budget



**FTN / GSM-R Power Connections**  
 Client: Network Rail  
 Date: August 2011 - ongoing

- Kelly ITS secured a nationwide framework agreement to design, supply, install and test power connections to approximately 800 sites on the cable and transmission network infrastructure supporting Network Rail's continued FTN/GSM-R programme
- Kelly ITS are acting as Principal Contractor when undertaking works orders under the framework
- For each site location, the works comprise of the survey and design, supply, and implementation of the power connections, from either a trackside or a DNO supply, to the REB



"Kelly ITS have provided quality resource support to EMCOR for the installation and testing of the TVM 430 trackside signalling equipment on the Channel Tunnel Rail Link 2 Project Contract 588. The Kelly ITS approach to the contract was carried out in a flexible and professional manner with a focus on delivery and working with EMCOR and its Customer to provide first class product to agreed milestones. The standard of the installed works was of high quality and was achieved working closely with EMCOR and the French providers of the system. EMCOR would have no hesitation in working with Kelly ITS in the future."

**D K J Lee**  
 Project Director C588 - EMCOR Rail Ltd



"Kelly ITS provided very specialist staff and management , who proved they could work within a very difficult environment and interface with many other contractors, to ensure the delivery of the systems detailed. I would recommend Kelly ITS...they are speciality contractors with the ability to deliver projects within restricted environments, on time and within budget."

**Phil Dawkins**  
 CTRL 105 St Pancras Delivery Manager - Costain O'Rourke Bachy Emcor Rail Joint Venture

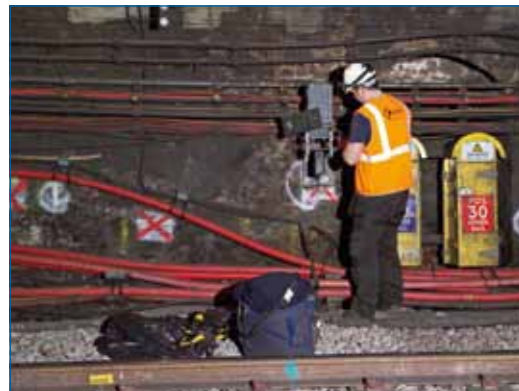


"Thank you for a successful weekend at Angel Lane/Stratford. Your team executed all the planned and significant additional works professionally within a short planning timescale. I was very impressed with the entire team including Gary and the team leaders who solved all the site issues and implemented them. In the 2012 programme - the four projects I have been involved with, I have to say your team is the best for doing cable route works. Safety arrangements, site/COSS briefings/Rimini Packs were also of a high standard. I look forward to working with your team again. My senior management on 2012 and ECML were also pleased with the outcome."

**Jeet Dhalaria**  
 Project Manager Angel Lane Project - Network Rail



# METRO



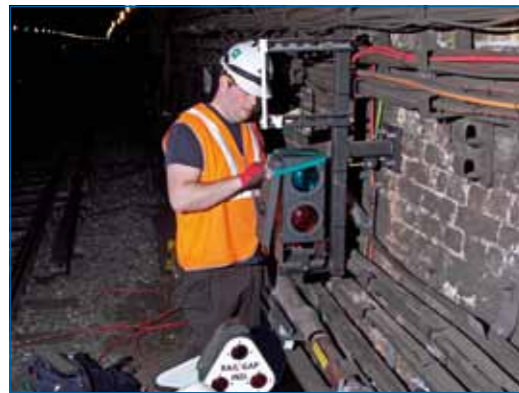
**Legacy Signalling OS5, OS8 & OS9 Modifications**  
**Client: London Underground**  
**Date: January 2011 - ongoing**

- Kelly ITS were awarded (following a competitive tendering process) a contract for the design, install and commissioning of alterations to OS5, 8 and 9
- Kelly ITS and its signalling design partner (SKM) are responsible for final detailed design, installation and test & commissioning activities at Aldgate, Aldgate East, Tower Hill, Baker Street, Paddington, Notting Hill Gate, Bayswater, Goldhawk Road, Royal Oak and Westbourne Park
- Kelly ITS provide individual Site Reports which provide LU with thorough and technically viable options for implementing signalling solutions



**Correlation Framework**  
**Client: London Underground**  
**Date: Current**

- London Underground are upgrading the Sub Surface Railway (SSR) signalling infrastructure. Kelly ITS were successfully awarded the first of the priced packages of work to be carried out within the framework
- The priced package involves the planning and implementation of correlation works in preparation for the installation and upgrade works which are to be carried out during the Sub Surface Railway Upgrade programme



**Connect**  
**Client: London Underground**  
**Main Contractor: Thales Security, Solutions and Services Ltd**  
**Date: June 2006 - ongoing**

- Kelly ITS secured a contract to work with Thales Security, Solutions and Services Ltd to install the new communications infrastructure thanks to our growing reputation for technical competence and proven delivery in the telecoms sector
- The main elements of the project were a new implementation of Airwave communications system, integrated terrestrial radio, transmission and Closed Circuit Television (CCTV) system to replace the existing legacy systems
- A number of telecommunication and electrical works were involved in this project

“Please pass on a massive well done to everybody in KITS and SKM, this news has gone to the highest levels within the Programme and beyond. Brian’s comments do not begin to reflect the relief being felt by senior management and the recognition of the success is there for all to see. Well done!”

**Dave Howarth**  
**S7 Legacy Signalling SSR Upgrade APM – London Underground**



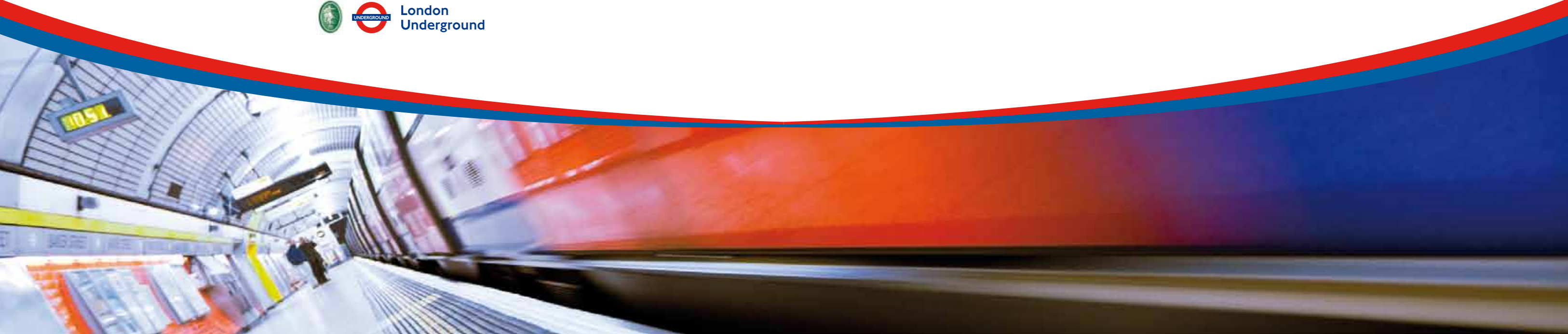
“Kelly ITS has some excellent processes in place and manages the assessment and quality assurance to a high standard, in particular the in-depth internal audit and internal verification”

**Mike Moore**  
**Lead Auditor – Institution of Railway Signal Engineers**



“The works were delivered to programme by the Principal Contractor KITS with extensive integration and support from LU’s internal Signalling & C&I teams, Track Access Team, Track Delivery Unit (TDU), Top Down Engineering (TDE) and Assurance. Well done to the team and all those who supported the successful implementation of the scope and also to those who demonstrated true collaborative working by being flexible with their own scope and commitments in order that this requirement was delivered on time.

**Iain Smith**  
**SSR Upgrades – Programmes Delivery – London Underground**



# HSQE

## Accreditations

ISO 9001  
ISO 14001  
Network Rail Principal Contractor  
London Underground Principal Contractor  
Highways Electrical Registration Scheme  
NICEIC Approved  
IRSE Assessing Agent  
CHAS Compliance  
Constructionline



## Safe by Choice

Kelly ITS have an excellent safety record and are running a behavioural safety initiative called Safe by Choice. Our company's main aim is to ensure every member of staff returns home safely. Safety of staff, project stakeholders and the public at large is our number one priority.



**Registered Address:**

**Kelly Integrated Transport Services Ltd  
Kelly House  
8 Headstone Road  
Harrow  
Middlesex  
HA1 1PD**

**Tel: 0208 424 0909**

**Main Office Address:**

**Kelly Integrated Transport Services Ltd  
Unit 21 Kynoch Road  
Eley Industrial Estate  
Edmonton  
London  
N18 3BD**

**Tel: 0208 884 6605**

**Website: [www.kelly.co.uk](http://www.kelly.co.uk)  
E-Mail: [KITenquiries@kelly.co.uk](mailto:KITenquiries@kelly.co.uk)**